

**Fte**<sup>®</sup>  
maximal

**MAX S93+**





The lightning flash with arrowhead symbol, within an equilateral triangle, is intended to alert the user to "dangerous voltage" and to prevent from a risk of electric shock.

**CAUTION**  
**RISK OF ELECTRIC SHOCK**  
**DO NOT OPEN**

**WARNING:** To reduce the risk of electric shock, don't open the cabinet. Refer servicing to qualified personnel only.



The exclamation point within an equilateral triangle is intended to alert the user to important operating and maintenance (servicing).

Danger of explosion if battery is incorrectly replaced. Replace only with the same or equivalent type.

Warning:

- The apparatus shall not be exposed to dripping or splashing and that no objects filled with liquids, such as vases, shall be placed on the apparatus.
- Do not place naked flame sources, such as lighted candles on the apparatus; otherwise, there is the danger of fire.
- The unit should be connected to a power supply only of the type described in the operating instructions or as marked on the unit. If you are not sure of the type of power supply (for example: 120 or 230V) to your home, consult your local dealer or local power company.
- Do not open the cabinet or touch any parts in the inner mechanism. Consult your local dealer for technical service if the opening is required.
- The mains plug is used as the disconnect device, the disconnect device shall remain readily operable.
- Take attention to the environmental aspects of battery disposal. The battery of remote control should not be exposed excessive heat such as sunshine, fire or the like.
- Maintenance man must use the appointed screw in the rear plate.
- Ensure a minimum distance of 5 cm around the apparatus for sufficient ventilation.
- Ensure that the ventilation is not impeded by covering the ventilation openings with items such as newspapers, table-cloths, curtains, etc.
- Use the apparatus only in moderate climates (not in tropical climates).
- Do not open the cabinet to avoid the unit direct exposure to radiation.

**Unit Cleaning:** After the unit power is turned off, you can clean the cabinet, panel and remote control with a soft cloth lightly moistened with a mild detergent solution.

**Attachments:** Never add any attachments and/or equipment without the manufacturer consent; as such additions may result in the risk of fire, electric shock or other personal injury.

**Locating:** Slots and openings in the cabinet are provided for ventilation to protect it from overheating. Do not block these openings or allow them to be blocked by placing the STB on a bed, sofa or other similar surface, nor should it be placed over a radiator or heat register.

**Power-Cord Protection:** Place the power-supply cord out of the way, where it will not be walked on. Please take special attentions to cords at plugs, convenience receptacles and the point where they exit from the unit.

**Object and Liquid Entry:** Never put objects of any kind into this STB through openings, as they may touch dangerous voltage points or short-out parts that could result in a fire or electric shock. Never spill any liquid on the STB.

**Note:** Moisture may be formed inside the unit in the following conditions:

When the unit is suddenly moved from a cold environment or an air-condition room to a warm place.

Immediately after a heater has been turned on.

In a steamy or very humid room.

If the moisture forms inside the unit, it may not operate properly. To correct this problem, turn on the power and wait about two hours for the moisture to evaporate.

**Parts Replacement:** When the unit parts need to be replaced, user should make sure the service technician use the replacement parts specified by the manufacturer or having the same characteristics as the original part. Unauthorized replacement may put the unit in the risk of fire, electric shock or other hazards.

**Safety Check:** After all the maintenances and repairs are done, user is required to request the service technician to conduct the overall safety check to ensure the machine is in the proper condition.

# QUICK INSTALLATION GUIDE



In order to download the complete user's guide and get more information about receivers, please visit the website <http://receivers.ftemaximal.com>

## QUICK INSTALLATION GUIDE

**FOLLOW NEXT STEPS FOR THE CORRECT INSTALLATION OF THIS RECEIVER.**

### STEP 1: CONNECTIONS

The coaxial cable, with satellite signal, must be connected to the "IF IN" connector. The "TV SCART" connector must be connected to the TV set.

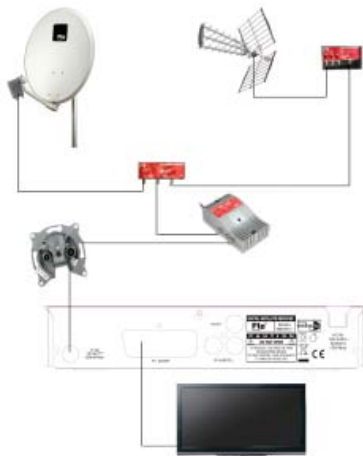
Depending on the type of installation, the receiver should be connected and configured following next examples.



**Example 1 - Basic System**



**Example 2 - DISEqC switches**



**Example 3 - Combined with terrestrial**



IMAGE 1

## STEP 2: BASIC CONFIGURATION OF THE RECEIVER

The receiver includes an installation assistant (Quick Setup) that will help you to setup the different parameters.

When the receiver is turned on at first time, the next menu is shown on the TV (Image 1):

The receiver is programmed with all the channels of Astra (at position 1 of the DISEqC), Hotbird (at position 2 of the DISEqC), Hispasat (at position 3 of the DISEqC) and Turksat (at position 4 of the DISEqC). If your installation is different to this case, please follow installation steps to search the channels.

In order to move through the different options of this menu, please use the keys [◀ ▶] of your remote control. If a "Short circuit on the LNB" message is shown on the TV, please check the connections before continuing the installation.

*Language.* press [◀ ▶] to select languages. The selection of languages include: English, German, French, Spanish, Italian, Portuguese, Turkish, Polish, Russian, Danish, Greek, Hungarian, Arabic, Farsi.

*First Audio.* Some channels offer more than one audio language. This function allows you to set the preferred audio language for those channels using [◀ ▶]. If a channel offers the same audio language as the "First Audio" you set the system will play this audio language as default. If the channel does not offer this audio language then the system will compare the offered languages with the second audio language. The selections of audio languages include: English, German, French, Spanish, Italian, Portuguese, Turkish, Polish, Russian, Danish, Greek, Hungarian, Arabic, Farsi.

*Second Audio.* If the channel has no audio language that corresponds with "First Audio" but with "Second Audio" the system will play the second audio language as default. If no audio language corresponds with the "Second Audio" then the default language of the current channel will be played instead. The selections of audio languages include: English, German, French, Spanish, Italian, Portuguese, Turkish, Polish, Russian, Danish, Greek, Hungarian, Arabic, Farsi.

*LNB Power.* Here you can set the power output to the LNB. If your receiver is connected to the LNB directly then you need to set the LNB Power to "On". If your receiver is connected to a multi switch (SMATV signal distribution system) then it may be that you don't need to provide the power to the LNB. But since this is depending on the kind of installed distribution system we recommend you to contact your installer or to refer to the user



IMAGE 2



IMAGE 3

manual of this system to get the correct information.

*Single search.* You can edit the following items (Image 2):

1. Satellite: Press [ ] to switch Satellites or press [OK] to enter satellite list to select directly.
2. LNB Configuration: Selecting this option and pressing [OK], the LNB Configuration menu will be displayed. In this menu, next options can be modified (Image 3):
  - LNB Type: Press [ ] to switch among "Standard", "User" and "Universal" mode. If you select "Standard" or "User", the frequency of the LNB can be changed. Pressing [OK] the frequencies will appear to be edited. Select the frequency you want to edit and change the value with [ ]
  - 22K: Use [ ] to switch "ON" and "Off". The 22 kHz signal is used in KU Universal LNBS to change between low band and high band. After choosing LNB type "Universal" you cannot modify 22K.
  - DiSEqC1.0: Use [ ] to switch the options of DiSEqC switches.
  - DiSEqC1.1: Use [ ] to switch the options of DiSEqC1.1 switches.
  - Positioner: \* **This receiver does not allow moving Diseq motors**
  - Polarity: Press [ ] to switch between "Auto / H / V".
- Once the LNB is configured, press [Exit] to save the changes and go to the previous window to continue configuring the antenna.
- Toneburst: Press [ ] to switch this function "On" or "Off".
3. DiSEqC1.0: Use [ ] to switch the options of DiSEqC switches.
4. On "TP Index" item use [ ] to select the desired transponder.
5. In the "FTA Only" item, press [ ] to select to scan only free channels or even scrambled channels. If you select "Yes" it will scan free channels only.
6. In "Scan Channel" item, press [ ] to select to scan TV + Radio Channels, or just TV channels or just Radio channels.
7. In "Scan Mode" item you can select "Auto Scan" to blind scan or "Preset Scan" to scan all preset transponders.
8. Move the highlight to "Search" and press [OK] button to start scanning. Bars are showing the progress of the channel scanning in the lower part of the window and the found channels are listed.  
You can stop the scan with [Exit] and save the so far found channels.
9. Press [Exit] to exit this menu. A window to confirm the changes will appear.

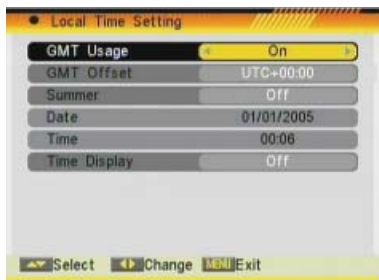


IMAGE 4

*Multi search.* You can edit the following items (Image 4):

1. On "Satellite" item press [OK] to open the satellite list. Then press [◀ ▶] to move the highlight and press [OK] to mark/unmark and [EXIT] to finish the selection. You can select several satellites in this menu. At the bottom of the screen you can see the selected satellites. The system will use DiSEqC1.0/1.1 functions to search the marked satellites and scan channels.
2. On "FTA Only" item, press [◀ ▶] to select scanning of all channels or just scanning of free channels. If you select "Yes" it will scan free channels only.
3. On "Scan Channel" item, press [◀ ▶] to select the scanning range from TV + Radio Channels, only TV channels or only Radio channels.
4. On "Scan Mode" item, you can select "Auto Scan" to make a blind scan or "Preset Scan" to scan all preset transponders of the selected satellites.
5. Select "Search" and press [OK] to start scanning. In the lower part of the window the progress of scanning and the found channels are displayed.
6. Press [Exit] to cancel or finish the scanning and saving the found channels.

Main Menu: Selecting this option, the main menu will appear on the TV.



**IMAGE 5**

## STEP 3: TIME CONFIGURATION

It is recommended to setup the clock before starting to enjoy the receiver, because correct time maybe is required by some applications. Please complete following options:

Press the [Menu] key of the remote control for appearing the main menu. Select the "System Setup" option and confirm pressing [OK].

Once in the "System Setup" option, please select "Local Time setting" option and press [OK]. Select "Time" option and press [OK]. Image 5 is watched on the TV. For setting up the time, please complete:

1. GMT Usage: this option will allow you to select if the date and time will be introduced manually (GMT Usage: Off) or if you wish to introduce the offset respect GMT manually (GMT Usage: On).
2. GMT Offset: If GMT Usage is On, the offset respect GMT has to be configured depending on your region or country. Use the [← →] keys to choose the offset. Remember that the offset values are between -12:00 and +12:00
3. Summer: this option is only available when "USE GMT" is enabled. Use [← →] to switch on/off the summer timetable.
4. Date / Time: In order to introduce manually the time and date. Before these values can be modified, the automatic control of GMT has to be turned off.

**NOTE:** If the current channel provides the correct time information, you will see the current time after you entered "Time" menu. If the channel doesn't provide time information, you have to input the date and time information manually. The most channels support the time signal.

5. Show time: Use [← →] to switch on/off this option. When the option is enabled, the time will be displayed at the TV in a frame in the top right margin.
6. Press [Exit] to exit the menu.

## Channel

- TV Channel List: This option shows the list of TV stored channels.
- Radio Channel List: This option shows the list of Radio stored channels.
- Channel Setup: This option allows setting the receiver to start in a predefined channel.
- Favourite Channel List Name: It allows changing the name of the favourite groups.
- Delete All: This option deletes all TV and Radio stored channels.
- Restore channel list and settings: This option loads the user TV and Radio channel list, saved previously.
- Save channel list and settings: This option makes a backup of the channel list and it will allow restoring the channel list even though after a factory default.

## Installation

- Single Search: Once the antenna is configured, this option allows search for the channels of one satellite.
- Multi Search: Once the antenna is configured, this option allows search for the channels of various satellites.
- TP Search: Once the antenna is configured, this option allows search for the channels of one TP.
- TP List: This option shows all the stored TP. This list can be modified.
- Satellite List: This option shows all the stored satellites. This list can be modified.
- Satellite Guide: After introducing some data, this application allows to know which orientation and elevation should be the antenna.
- Unicable Configuration.





## System Setup

- Language: This option allows choosing the language of the menus.
- TV System: This option allows choosing the video Standard and other parameters of the screen.
- Time & Timer Setting: Timer setting menu.
- OSD Setting: This option allows configuring the subtitles of the channel information.
- Parental Lock: In this option, user can lock the access to the menu and change the password of the receiver.
- Power setting: Activate or deactivate the automatic Standby option after 3 hours, turns on or off the LNB power or enable / disable Low Power Consumption mode (<1W in standby. By default this option is enabled).



## Tools

- Information: Shows all the technical information for the selected channel.
- Quick Setup: The installation assistant will be loaded.
- Factory Default: This option resets the receiver and loads the factory default values.
- Software Upgrade: To update the receiver by satellite.

## Safety Precaution

Caution.....	12
--------------	----

### 1. Panel & Remote Control Description

1.1. Front Panel Description.....	13
1.2. Rear Panel Description.....	13
1.3. Remote Control Description.....	14

### 2. Basic Operations

2.0. Switch on STB.....	14
2.1. Standby .....	15
2.2. TTX .....	15
2.3. Mute.....	15
2.4. Channel Number.....	15
2.5. Multi-Pictures.....	15
2.6. CH + / CH -.....	15
2.7. TV/RADIO.....	15
2.8. Vol+/Vol-.....	15
2.9. Exit.....	16
2.10. Menu.....	16
2.11. Recall.....	16
2.12. Channel List.....	16
2.13. EPG.....	16
2.14. List.....	17
2.15. Favourites.....	17
2.16. Audio Track / Mode.....	17
2.17. Information.....	17
2.18. FAV +/-.....	18
2.19. ZOOM.....	18
2.20. Subtitles.....	18
2.21. LNB Short.....	18

### 3. Channel

3.1. TV Channel List.....	19
3.1.1. Favourite.....	19
3.1.2. Move.....	20
3.1.3. Sort.....	20
3.1.4. Edit.....	20
3.1.4.1 Delete.....	20
3.1.4.2 Skip.....	20
3.1.4.3 Lock.....	21
3.1.4.4 Edit.....	21
3.1.5. Find.....	21
3.2. Radio Channel List.....	22

rev 1.0

3.3 Channel Setup.....22  
 3.3.1. Start-up Channel.....22  
 3.3.2. Channel Play Type.....22  
 3.4. Favourite Channel List Name.....22  
 3.5. Delete All.....22  
 3.6. Restore channel list and settings.....23  
 3.7. Save channel list and settings.....23

4. Installation

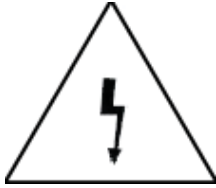
4.1. Single Search.....24  
 4.2. Multi Search.....25  
 4.3. TP Scan.....26  
 4.4. Satellite List.....27  
 4.5. TP List.....27  
 4.6. Satellite Guide.....28  
 4.7. Unicable configuration.....28

5. System Setup

5.1. Language.....29  
 5.2. TV System.....29  
 5.3. Time & Timer Setting .....30  
 5.3.1. Timer.....30  
 5.3.2. Local Time setting.....31  
 5.3.3. Sleep Timer.....32  
 5.4. OSD Setting.....32  
 5.5. Parental Lock.....32  
 5.6. Power Settings.....33

6. Tools

6.1. Information.....34  
 6.2. Quick Setup.....34  
 6.3. Factory Default.....35  
 6.4. Software Update.....35  
 6.4.1. Upgrade by Satellite.....35  
 7. Technical Specification.....36  
 8. Conformity declaration.....37



The lightning flash with arrowhead symbol, within an equilateral triangle, is intended to alert the user to "dangerous voltage" and to prevent from a risk of electric shock.

**CAUTION**

**RISK OF ELECTRIC SHOCK**

**DO NOT OPEN**

**WARNING:** To reduce the risk of electric shock, don't open the cabinet. Refer servicing to qualified personnel only.



The exclamation point within an equilateral triangle is intended to alert the user to important operating and maintenance (servicing).

Danger of explosion if battery is incorrectly replaced. Replace only with the same or equivalent type.

Warning:

- The apparatus shall not be exposed to dripping or splashing and that no objects filled with liquids, such as vases, shall be placed on the apparatus.
- Do not place naked flame sources, such as lighted candles on the apparatus; otherwise, there is the danger of fire.
- The unit should be connected to a power supply only of the type described in the operating instructions or as marked on the unit. If you are not sure of the type of power supply (for example: 120 or 230V) to your home, consult your local dealer or local power company.
- Do not open the cabinet or touch any parts in the inner mechanism. Consult your local dealer for technical service if the opening is required.
- The mains plug is used as the disconnect device, the disconnect device shall remain readily operable.
- Take attention to the environmental aspects of battery disposal. The battery of remote control should not be exposed excessive heat such as sunshine, fire or the like.
- Maintenance man must use the appointed screw in the rear plate.
- Ensure a minimum distance of 5 cm around the apparatus for sufficient ventilation.
- Ensure that the ventilation is not impeded by covering the ventilation openings with items such as newspapers, table-cloths, curtains, etc.
- Use the apparatus only in moderate climates (not in tropical climates).
- Do not open the cabinet to avoid the unit direct exposure to radiation.

**Unit Cleaning:** After the unit power is turned off, you can clean the cabinet, panel and remote control with a soft cloth lightly moistened with a mild detergent solution.

**Attachments:** Never add any attachments and/or equipment without the manufacturer consent; as such additions may result in the risk of fire, electric shock or other personal injury.

**Locating:** Slots and openings in the cabinet are provided for ventilation to protect it from overheating. Do not block these openings or allow them to be blocked by placing the STB on a bed, sofa or other similar surface, nor should it be placed over a radiator or heat register.

**Power-Cord Protection:** Place the power-supply cord out of the way, where it will not be walked on. Please take special attentions to cords at plugs, convenience receptacles and the point where they exit from the unit.

**Object and Liquid Entry:** Never put objects of any kind into this STB through openings, as they may touch dangerous voltage points or short-out parts that could result in a fire or electric shock. Never spill any liquid on the STB.

**Note:** Moisture may be formed inside the unit in the following conditions:

When the unit is suddenly moved from a cold environment or an air-condition room to a warm place.

Immediately after a heater has been turned on.

In a steamy or very humid room.

If the moisture forms inside the unit, it may not operate properly. To correct this problem, turn on the power and wait about two hours for the moisture to evaporate.

**Parts Replacement:** When the unit parts need to be replaced, user should make sure the service technician use the replacement parts specified by the manufacturer or having the same characteristics as the original part. Unauthorized replacement may put the unit in the risk of fire, electric shock or other hazards.

**Safety Check:** After all the maintenances and repairs are done, user is required to request the service technician to conduct the overall safety check to ensure the machine is in the proper condition.

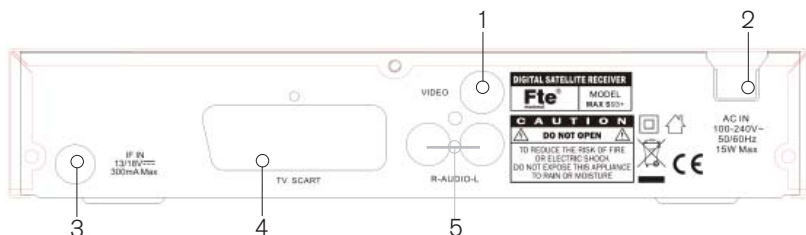
## 1. PANEL & REMOTE CONTROL DESCRIPTION

### 1.1. FRONT PANEL DESCRIPTION

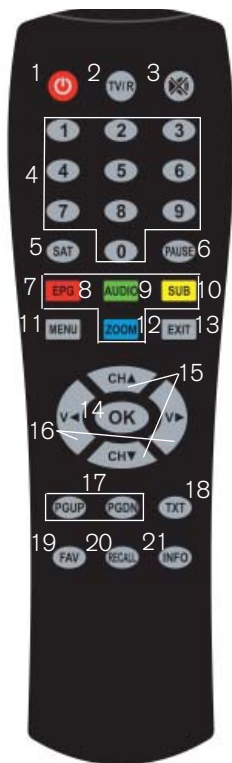


1. POWER: Switches the receiver on, or enters standby mode.
2. LOCK LED: Indicates a sufficient signal level at the IF IN input.
3. POWER LED: Indicates that the mains voltage (230 VAC) is available.
4. DISPLAY: 4 Digits to display the program numbers.
5. IR-SENSOR: Reception sensor for the IR remote control signals.
6. CH+/-: These buttons allow changing the current channel.

### 1.2. REAR PANEL DESCRIPTION



1. VIDEO: Video output for external monitor, TFT or video beamer.
2. AC IN: Mains input cable.
3. IF IN: Satellite input. LNB load: Max. 300mA
4. TV SCART: Output SCART for the connection to a TV set.
5. AUDIO: Audio output for home audio systems.



ENGLISH

1. POWER: Switches receiver ON or in stand-by-mode.
2. TV/R: Switches between TV and Radio channels.
3. MUTE: Switches audio on and off.
4. NUMERIC KEYS: For direct typing values.
5. SAT: It shows the satellite list.
6. PAUSE: If you press it once, you will stop the image, and it will come back to normal mode when you press it again.
7. Color Keys: Controls menu options.
8. EPG: Shows the EPG information.
9. AUDIO: Opens audio menu.
10. SUB: Switches subtitle on and off.
11. MENU: Opens the main menu.
12. ZOOM: Zoom function.
13. EXIT: Exit menus or stop operations.
14. OK: Confirms selections or opens channel list.
15. (CH+/CH-): Changes channels volume or controls the cursor in menus.
16. (V+/V-): Adjusts audio volume or controls the cursor in menus.
17. PGUP / PGDN: Moves cursor in block steps.
18. TXT: Opens and closes teletext.
19. FAV: Opens favourite channel list.
20. RECALL: Watch the last viewed channel.
21. INFO: Shows channel information with signal bar.

## 2. BASIC OPERATIONS

### 2.0. SWITCH ON STB

When the STB is first used it will display the quick setup page where the receiver can be configured quickly.

For further use the STB will play the same channel as last time when it was switched off.

### ? FREQUENTLY ASKED QUESTION

*Q: The power of my STB is on and it is running in TV mode but the TV screen shows nothing:*

*A: Make sure the TV set has been set to the correct video input (not the TV channels). For example, if you have connected the STB to the Video 1 input of the TV set, then you need to select the corresponding Input on the TV. Mostly it is done with the AV button of the TV's remote control unit.*

*Q: My STB is running in TV mode but the TV screen shows nothing except one ball and "No Signal".*

*A: That means the channel you selected has no signal. This can be caused by several reasons:*

*1. The channel you selected is not from the satellite to which your dish is pointing. Select another channel.*

*2. The signal of current TV channel is too weak. You can try to change to other channels with a stronger signal. If the problems still exist, please consult your local dealer or installer for technical service.*

*3. You selected the wrong LNB type in the installation menu or your DiSEqC switch configuration is not correct.*

## 2.1. STANDBY

1. Press [Power] button to switch from TV mode to Standby mode.
2. In Standby mode press [Power] button again to switch back to TV mode. The last active channel will be showed.



OSD 1

## 2.2. TTX

1. Press [TXT] button in TV mode to open the teletext page (OSD 1). This service is depending on the support of the channel provider.
2. If the channel does not support teletext information, it will show "No Teletext Data" on the screen.

## 2.3. MUTE

1. Press the [Mute] button to mute the sound. On the screen an icon will be displayed to indicate the muted sound (OSD 2).
2. Press the [Mute] button again to restore the sound.



OSD 2

## 2.4. CHANNEL NUMBER

In TV mode you can enter the channel number directly with your remote control unit and confirm the number with the OK button to change to the desired channel.

## 2.5. MULTI-PICTURES

In TV mode, press [0] button to enter the Multi-Picture mode (OSD 3).

1. In Multi-Picture mode the screen will display 9 channels' preview window (static), starting from the current channel. Only the marked preview program is continuously playing.
2. Press [◀▶▶▶] to change the marked channel among the preview programs.
3. With the number buttons [1] ~ [9] you can directly move the highlight to the related channel.
4. With [OK] you return to full screen mode in the marked channel.



OSD 3

## 2.6. CH +/ CH -

In TV mode press [CH+/CH-] to change channel.

## 2.7. TV/RADIO

In TV mode, press [TV/R] to switch to Radio mode. In Radio mode press [TV/R] again to switch back to TV mode.

## 2.8. VOL+/VOL-

In TV mode, press [Vol+/Vol-] to adjust volume.



OSD 4

## 2.9. EXIT

Press [Exit] button to exit the current menu.

## 2.10. MENU

Press [Menu] button to enter or exit the current menu.

## 2.11. RECALL

Pressing the [Back] button allows you to toggle between the actual and the last selected channel.

## 2.12. CHANNEL LIST

In TV mode press [OK] button to open the Channel List window.

Reduced Channel List (OSD 4):

You can use [Left Arrow] [Right Arrow] [Up Arrow] [Down Arrow] keys to navigate this list.

1. Press [Yellow] button to open the SAT list. After selecting a satellite the channel list will be reduced to the channels of this satellite.
2. Press [Blue] button to open the "Find" window. You can use this feature to find channel by their names.
3. Press [Red] button to open the expanded channel list.
4. Once the desired channel is selected, press [OK] to change and display the marked channel.

Expanded Channel List (OSD 5):

You can use [Left Arrow] [Right Arrow] [Up Arrow] [Down Arrow] keys to navigate this list.

In this view, you can get more information about the frequency, polarity, symbol rate and PID of the selected channel.

1. Press [Green] button to sort the channels by free and scrambled channels. Free channel are listed first and scrambled channels last.
2. Press [Yellow] button to open the SAT list. After selecting a satellite the channel list will be reduced to the channels of this satellite.
3. Press [FAV] button to open FAV list. After selecting a Favourite Group the channel list will be reduced to the channels of this group.
4. Press [Blue] button to open the "Find" window (OSD 6). You can use this feature to find channel by their names.
5. Press [Red] button to open the reduced channel list.
6. Once the desired channel is selected, press [OK] to change and display the marked channel.



OSD 5



OSD 6

## 2.13. EPG

1. The STB supports Electronic Program Guides (EPG) to give you information about the actual programs of certain channels like event name, subtitle, description, start and finish time. This





OSD 7



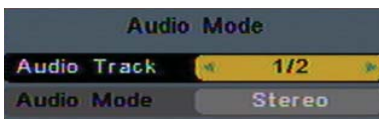
OSD 8



OSD 9



OSD 10



OSD 11

feature is depending on the service of the channel provider. Press [EPG] to open the EPG window (OSD 7).

2. The [Red] button opens the detailed schedule of the marked channel (OSD 8). You can select an event with [Left/Right] and display the event's detailed description with [OK]. With the [Yellow] button you can program a timer with the start and finish time and date of this event.

3. Press the [Green] button in the EPG menu to display the detailed information of the actual event in the selected channel (OSD 9). With the [Red] button you can get more information about the events of the channel. With the [Yellow] button you can program a timer with the start and finish time and date of this event.

4. To close the EPG menu press [Exit].

## 2.14. LIST

In TV mode, press [List] button to access directly to the "TV Channel List" menu or in Radio mode, press [List] button to access directly to the "Radio Channel List" menu.

## 2.15. FAVOURITES

1. In TV mode press the [Favourite] button to display the Favourite Group window on the screen as the picture beside shows (OSD 10).

2. In the Favourite Group window you can select the desired favourite channel with [Left/Right] and confirm it with [OK] to switch to it. In bigger groups you can navigate with [Pup/Pdw].

3. With [Left/Right] you can select different Favourite Group.

4. Press [Exit] to close the Favourite Group window.

## ? FREQUENTLY ASKED QUESTION

*Q: Why the screen displays "No Favourite Channel" after pressing the [Favourite] button?*

*A: No channels have been assigned to a Favourite Group yet. You can do this in the channel menu.*

## 2.16. AUDIO TRACK / MODE

1. In TV mode, press the [Audio] button to open the Audio Mode window (OSD 11).

2. Select the item you want to adjust with [Left/Right] and change the value with [Left/Right].

3. Press [Exit] to leave this window.

## 2.17. INFORMATION

In TV mode, press [INFO] button can open information screen (OSD 12), in the window shows the parameters of current channel.



OSD 12

## 2.18. FAV +/-

1. In TV mode press the [FAV+ / FAV-] buttons to switch between the favourites channels in the current Favourite Group directly.
2. The sequence of the favourite channels is following the sequence in the related Favourite Group list.

## 2.19. ZOOM

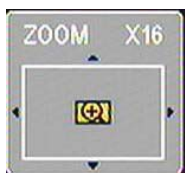
1. Press [Zoom] button in TV mode to zoom the image. Image can be augmented x16 times (OSD 13).
2. Press [Exit] to exit this function.

## 2.20. SUBTITLES

In TV mode, press [Sub] button for activating / deactivating the channel subtitles, depending on the provider information.

## 2.21. LNB SHORT

When LNB is short, it will notify user on screen "LNB Short!" (OSD 14). Please check your cables and connections for shorts. When the short is removed the warning message will disappear.

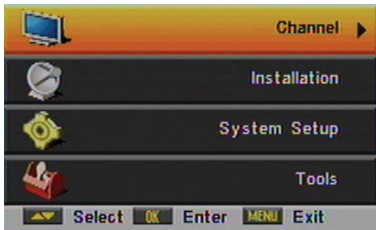


OSD 13



OSD 14

## 3. CHANNEL



OSD 15



OSD 16



OSD 17



OSD 18

Press [Menu] in the TV mode to enter the main menu (OSD 15).

1. Press [ ] to select the Channel item.
2. Press [OK] to enter the selected item.

In the Channel menu (OSD 16):

3. Press [ ] to select the wanted menu item.
4. Press [OK] to enter the selected item among.
  - TV Channel List
  - Radio Channel List
  - Channel setup
  - Favourite channel list name
  - Delete All
  - Restore channel list and settings
  - Save channel list and settings

### 3.1. TV CHANNEL LIST

If you enter the Channel List menu a window like the one besides will open (OSD 17).

1. You can move the highlighted channel with [ ] and press [OK] to preview the highlighted program in the preview window.
2. You can enter directly the number of the desired channel with the remote control. The selection will select that channel, but it will not be previewed until you confirm with [OK] button.
3. Press [Pup/Pdw] on the RCU to jump between the channels by pages.
4. Press [ ] to switch the Program Group.
5. Press [Menu], [Exit] or [Ok] buttons to enter TV mode playing mode.
6. The colour buttons offer further functions to manage the channel list.

### 3.1.1. FAVOURITE

1. Press [FAV] to open the Favourite window (OSD 18).
2. You can select between 8 favourites groups with [ ]. Press [OK] to assign the channel to a Favourite group.
3. Press [OK] again to remove the channel from the marked Favourite group.
4. Press [Exit] button to return to the TV Channel List. The channels of Favourites Groups are indicated with a favourite icon behind the name.



**OSD 19**

### 3.1.2. MOVE

1. To move/change channels: Pushing the [Red] button, you will see a picture like OSD 19. You will be able to move or change the position of the channels:

- Push again the [Red] button to move the channel.
  - Push the [Green] button to change the position of the channel.
2. Move the channel to the desired position with [Left/Right]. Press [OK] to confirm the position.



**OSD 20**

### 3.1.3. SORT

1. Press [Green] to open the Sort window (OSD 20). Press [Left/Right] to select and [OK] to confirm your choice.

2. The ways of sorting are:

- Name (A-Z): Sorting in Alphabetical Order, ignoring "\$" symbol.
- Name (Z-A): Sorting in Alphabetical Order, ignoring "\$" symbol.
- FTA: Sort channel by free and scrambled sequence. Free channels will be listed first and scrambled channels behind in the channel list.
- Lock: Unlocked channels are listed first end locked channels at the end.
- Default: Load the default sort of channels.



**OSD 21**

### 3.1.4. EDIT

1. After pressing the [Yellow] button a window for entering the password will open. The default password is "0000".

- 2. You can Delete, Skip, Lock and Edit the channel (OSD 21).
- 3. Press [Exit] to leave the Channel Editing. The system will ask you to confirm the saving of the changes you made.



**OSD 22a**

#### 3.1.4.1 DELETE

In Channel Edit menu press [Red] button to mark a channel for deleting.

A confirmation of deleting one or all channels from the list is displayed (OSD 22a):

- Please, confirm pushing the [Red] button to select the channels one by one. Only the selected channels will be deleted.
- Confirm pushing the [green] button to select all the channels from the list.

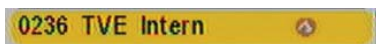
Marked channels (OSD 22) will be deleted after you confirm to save the changes when you leave this menu.



**OSD 22**

#### 3.1.4.2 SKIP

In Channel Edit menu, press [Green] button to place a Skip icon behind the name of the highlighted channel. Marked channels (OSD 23) will be skipped when you change channels in TV.



**OSD 23**

0236 TVE Intern

OSD 24



OSD 25



OSD 26



OSD 27



OSD 28

mode after you confirm to save the changes when you leave this menu.

### 3.1.4.3 LOCK

In Channel Edit menu, press [Yellow] button to place a Lock icon behind the name of the highlighted channel. Marked channels (OSD 24) will be locked and displayed only after password has been entered if you confirm to save the changes when you leave this menu.

### 3.1.4.4 EDIT

Pressing the [Blue] button in the TV Channel List Edit menu will open another window where you can choose between Edit the actual channel or create a new channel (OSD 25).

1. Edit current channel: To edit the channel press the [Red] button (OSD 26).

- Name: You can edit the name of the current channel using the keys on the remote control.
- On the "Video PID", "Audio PID" and "PCR PID" items you can input numbers to modify the item's value.
- After modification select "Save" and press [OK] button to save the modified values and exit "Edit" mode. Or select "Exit" and press [OK] to leave Edit mode without saving the modifications.

2. Create: Press [Green] button to open the Create window (OSD 27).

- Press [OK] button on the "Satellite" item to display the satellite list. You can select the satellite for which you want to create a new channel.
- With marked "TP Index" item press [Left/Right] to select the TP number where the channel can be found. The next three items will show the related parameters.
- Highlight the "Name" item and edit the name of the current channel using the keys on the remote control.
- In "Video PID", "Audio PID" and "PCR PID" items you can enter the numbers directly to set these parameters of the new channel.
- After modification select "Save" and press [OK] to save the new channel and leave the Edit mode. Select "Exit" and press [OK] to exit the Edit mode without saving the new channel.

### 3.1.5. FIND

1. Press [Blue] button to open the "Find" window like showed besides (OSD 28). Press [Left/Right] to select the leading character of the channel name and press [OK] to confirm it.
2. After entering the character(s) highlight "OK" in the window and press [OK] on the RCU.
3. Press [Exit] button to close the Find window and brings you back to the channel list.





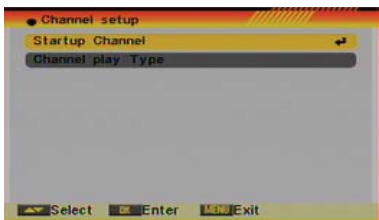
OSD 29

### 3.2. RADIO CHANNEL LIST

Basically the operation of “Radio Channel List” is same as “TV Channel List” (OSD 29).

### 3.3. CHANNEL SETUP

When you enter the “Channel Setup” menu you will see a screen like beside (OSD 30):



OSD 30

#### 3.3.1. START-UP CHANNEL

Press [OK] to enter “Start-up Channel” menu to see the screen like showed beside (OSD 31):

1. If you set of “Boot on Channel” to “On” you can edit the following two items. If the setting is “Off” the box always starts with the channel that was running when the box has been switched off.
2. On the “Mode” item you can select either “TV channel” or “Radio channel”.
3. On “Start-up Channel” item you can open the channel list by pressing [OK]. Then you can select the channel of your choice. Press [OK] again to confirm.



OSD 31

#### 3.3.2. CHANNEL PLAY TYPE

Press [OK] to enter “Channel Play Type” menu (OSD 32).

1. Here you can select the “playing channels” as “Free”, “Scrambled” or “All”.
2. If you select “Free” then all scrambled channels will be skipped when you change channels with [CH+/-].
3. Press [Exit] to leave the “Channel Setup” menu.



OSD 32

### 3.4. FAVOURITE CHANNEL LIST NAME

In this menu, user is able to change the name of the Favourite Groups. Press [OK] to enter this menu and you will see a screen like beside (OSD 33).

To change the name of the Favourites Groups:

1. Press [Left/Right] and select a Favorite Group.
2. Press [Ok] button to edit the name of the Group.
3. Once the name is correct, select “Ok” option and confirm pressing [OK] (OSD 34 next page).
4. If the name is used by other group, an alert message will appear on the TV.
5. Select “Exit” and press [OK] to leave this menu.



OSD 33

### 3.5. DELETE ALL

To delete all channels:

1. Enter the password. The default password is “0000”.
2. After entering the password correct a safety question will



OSD 34

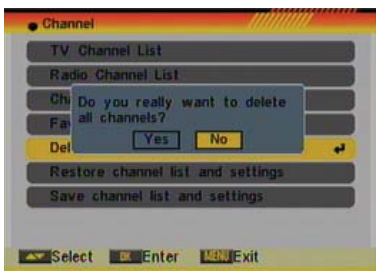
show up where you have to confirm first (OSD 35 next page).  
 3. Select "Yes" to delete all channels or "No" to cancel and confirm with [OK].  
 4. In step 2 and step 3, pressing [Exit] will exit the function directly without saving.

**? FREQUENTLY ASKED QUESTION**

*Q: If I incautiously delete all channels, what should I do?*

*A: There are three ways to restore:*

- To re-search all channels at the "Installation" menu.
- Use "Factory Default" function to restore all channels in the "Tools" menu. The receiver will load the factory channels.
- Use the "Restore channel list and settings" option as next point shows.



OSD 35

**3.6. RESTORE CHANNEL LIST AND SETTINGS**

Using this option, the receiver will load the channels saved as previously as a backup of the user channels list (see point 3.7.). For restoring the default channels, please:

1. Enter the password. The default password is "0000".
2. After entering the password correct a safety question will show up where you have to confirm first (OSD 36).
3. Select "Yes" to delete all channels or "No" to cancel and confirm with [OK].
4. In step 2 and step 3, pressing [Exit] will exit the function directly without saving.



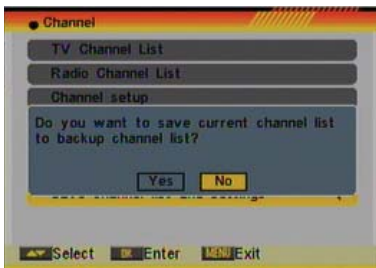
OSD 36

**3.7 SAVE CHANNEL LIST AND SETTINGS**

This option is very important, because here is where the security of your data lies. This option makes a backup of the channel list and it will allow restoring the channel list even though after a factory default.

Once you have customized your receiver and everything operates properly, you have the possibility, with this option, to save the programs' data.

1. Enter the password. The default password is "0000".
2. After entering the password correct a safety question will show up where you have to confirm first (OSD 37).
3. Select "Yes" to delete all channels or "No" to cancel and confirm with [OK].
4. In step 2 and step 3, pressing [Exit] will exit the function directly without saving.

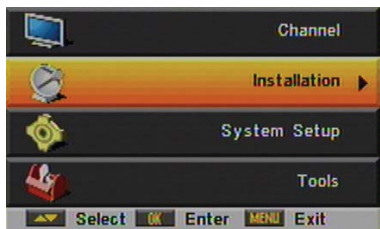


OSD 37

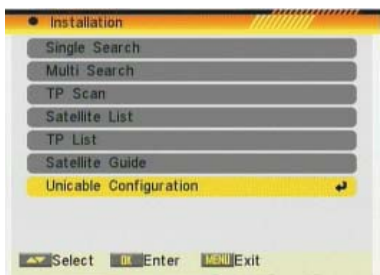
ENGLISH

rev 1.2

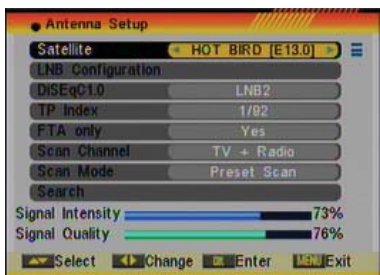
## 4. INSTALLATION



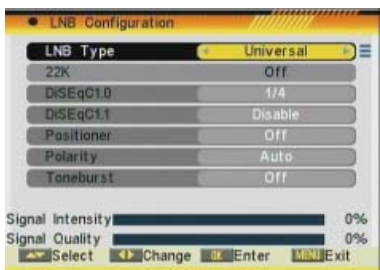
OSD 38



OSD 39



OSD 40



OSD 41

Press [Menu] in the TV mode to enter the main menu (OSD 38).

1. Press [Left] [Right] to select the Installation item.
2. Press [OK] to enter the selected item.

In the Installation menu (OSD 39):

3. Press [Left] [Right] to select the wanted menu item.
4. Press [OK] to enter the selected item among.
  - Single Search
  - Multi Search
  - TP Scan
  - Satellite List
  - TP List
  - Satellite Guide
  - Unicable Configuration

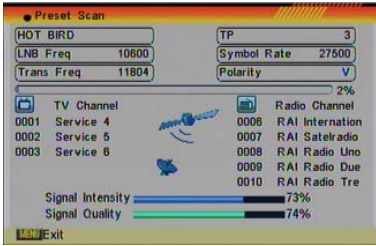
### 4.1. SINGLE SEARCH

After selecting Antenna Setup another window will be opened (OSD 40).

You can edit the following items:

1. Satellite: Press [Left] [Right] to switch Satellites or press [OK] to enter satellite list to select directly.
  2. LNB Configuration: Selecting this option and pressing [OK], the LNB Configuration menu will be displayed (OSD 41). In this menu, next options can be modified:
    - LNB Type: Press [Left] [Right] to switch among "Standard", "User" and "Universal" mode. If you select "Standard" or "User", the frequency of the LNB can be changed. Pressing [OK] the frequencies will appear to be edited. Select the frequency you want to edit and change the value with [Left] [Right].
    - 22K: Use [Left] [Right] to switch "ON" and "Off". The 22 kHz signal is used in KU Universal LNBs to change between low band and high band. After choosing LNB type "Universal" you cannot modify 22K.
    - DiSEqC1.0: Use [Left] [Right] to switch the options of DiSEqC switches.
    - DiSEqC1.1: Use [Left] [Right] to switch the options of DiSEqC1.1 switches.
    - Positioner: Press [Left] [Right] to select.\*
      - \* This receiver does not allow moving Diseq motors
    - Polarity: Press [Left] [Right] to switch between "Auto / H / V".
- Once the LNB is configured, press [Exit] to save the changes and go to the previous window to continue configuring the antenna.
- Toneburst: Press [Left] [Right] to switch this function "On" or "Off".





**OSD 42**



**OSD 43**



**OSD 44**



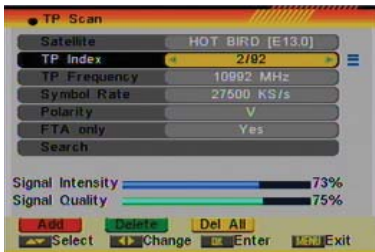
**OSD 45**

3. DiSEqC1.0: Use [◀▶] to switch the options of DiSEqC switches.
4. On "TP Index" item use [◀▶] to select the desired transponder.
5. In the "FTA Only" item, press [◀▶] to select to scan only free channels or even scrambled channels. If you select "Yes" it will scan free channels only.
6. In "Scan Channel" item, press [◀▶] to select to scan TV + Radio Channels, or just TV channels or just Radio channels.
7. In "Scan Mode" item you can select "Auto Scan" to blind scan or "Preset Scan" to scan all preset transponders.
8. Move the highlight to "Search" and press [OK] button to start scanning. Bars are showing the progress of the channel scanning in the lower part of the window and the found channels are listed (OSD 42).
- You can stop the scan with [Exit] and save the so far found channels.
9. Press [Exit] to exit this menu. A window to confirm the changes will appear.

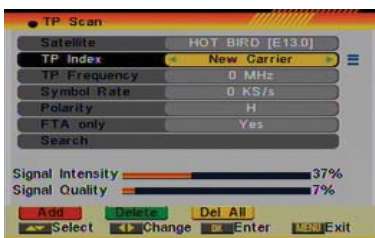
## 4.2. MULTI SEARCH

When you enter the "Multi Search" menu a window like the one beside will open (OSD 43).

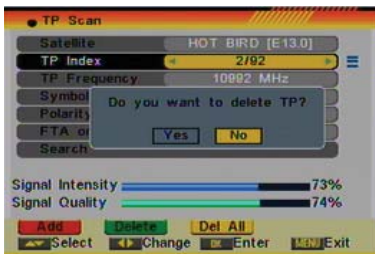
1. On "Satellite" item press [OK] to open the satellite list (OSD 44). Then press [◀▶] to move the highlight and press [OK] to mark/unmark and [EXIT] to finish the selection. You can select several satellites in this menu. At the bottom of the screen you can see the selected satellites (OSD 45). The system will use DiSEqC1.0/1.1 functions to search the marked satellites and scan channels.
2. On "FTA Only" item, press [◀▶] to select scanning of all channels or just scanning of free channels. If you select "Yes" it will scan free channels only.
3. On "Scan Channel" item, press [◀▶] to select the scanning range from TV + Radio Channels, only TV channels or only Radio channels.
4. On "Scan Mode" item, you can select "Auto Scan" to make a blind scan or "Preset Scan" to scan all preset transponders of the selected satellites.
5. Select "Search" and press [OK] to start scanning. In the lower part of the window the progress of scanning and the found channels are displayed.
6. Press [Exit] to cancel or finish the scanning and saving the found channels.



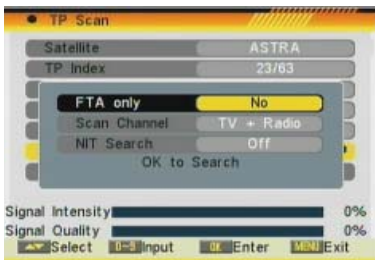
OSD 46



OSD 47



OSD 48



OSD 49

## 4.3. TP SCAN

When you enter "TP Scan" menu a window like the one beside will be displayed (OSD 46):

1. On "Satellite" item, press [ $\leftarrow \rightarrow$ ] to select the satellite you want to scan or press [OK] to open the satellite list for selection.

2. On "TP Index" item use [ $\leftarrow \rightarrow$ ] to select the desired transponder.

If any of the TP of the list have tuned and stored channels into the receiver, the following two options "Frequency" and "Symbol Rate" will not be able to be edited.

It means that the parameters cannot be modified by error neither losing the stored channels when any value of the data base is changed.

In case of any value, for example the Symbol Rate of a TP, has been modified by the provider and the receiver has these channels tuned, the TP must be deleted (it will delete all the channels of this TP), create it again with the correct data, and to carry out a new search of the TP.

In this item you can also add, delete or delete all TP.

- Press [Red] button to add a new TP (OSD 47). You have to set the parameters of "TP Frequency" and "Symbol Rate" for this new transponder. Therefore use the number buttons of the RCU. The available range are "3000~13450 MHz" and "1000~45000KS/s".

- Press [Green] button to delete the current TP. A safety question will be displayed for confirmation to delete the current transponder or not (OSD 48). If you select "Yes", the current transponder will be deleted and the total number of transponders will be reduced.

- Press [Yellow] button to delete all TP. A safety question will be displayed for confirmation to delete all transponders or not. If you select "Yes", all transponders will be deleted.

3. For transponders you also can use number buttons to modify the parameters of "TP Frequency" and "Symbol Rate" or [ $\leftarrow \rightarrow$ ] to change the value directly. "Polarity" and "Scan Mode" are used for setting scans conditions. Press [ $\leftarrow \rightarrow$ ] to select a different mode.

4. Polarity: Press [ $\leftarrow \rightarrow$ ] to switch between "Auto / H / V".

5. Search channels of the TP: Selecting this option, a new window appears, where you can configure the following parameters (OSD 49):

- On "FTA Only" item, press [ $\leftarrow \rightarrow$ ] to select scanning of all channels or just scanning of free channels. If you select "Yes" it will scan free channels only.

- On "Scan Channel" item, press [ $\leftarrow \rightarrow$ ] to select the scanning range from TV + Radio Channels, only TV channels or only Radio channels.

- Search NIT: If you select this option as "Off", the receiver



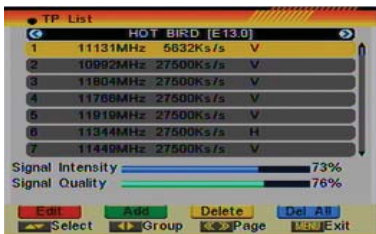
**OSD 50**



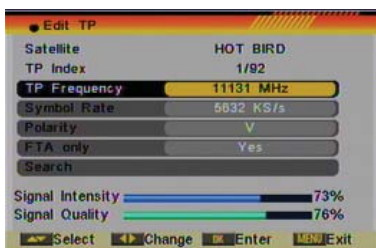
**OSD 51**



**OSD 52**



**OSD 53**



**OSD 54**

will search the selected TP. In case you select “On”, the NIT (Network Identification) will be identified and the receiver will automatically search all the TP of this network.

6. Press [OK] to start scanning.
7. On the “TP Scan” item, press [Exit] to cancel the scanning and saving the found channels.

## 4.4. SATELLITE LIST

When you enter the “Satellite List” menu you can see a window like the one beside (OSD 50):

1. Move through the satellite list using [Left/Right] and mark/unmark the satellites that you want pressing [OK]
2. Press [Red] button to enter edit satellite menu (OSD 51). You can edit the satellite’s name and its longitude. Once you have edited the satellite, select “Save” option and confirm with [OK]. If you prefer to exit without saving the changes select “Exit” and press [OK].
3. Press [Green] button to open the “Add satellite” window. You can edit the satellite’s name and its longitude. Once you have edited the satellite, select “Save” option and confirm with [OK]. If you prefer to exit without saving the changes select “Exit” and press [OK].
4. After pressing [Yellow] button you will be asked “Are you sure to delete?” (OSD 52). Select “Yes” to delete the marked satellite. Select “No” to cancel the operation.

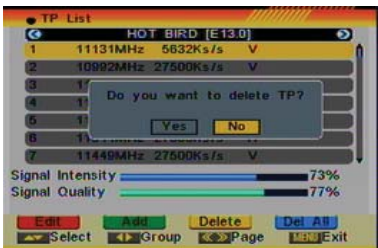
## 4.5. TP LIST

When you open the “TP List” menu you will see a window like the one beside (OSD 53).

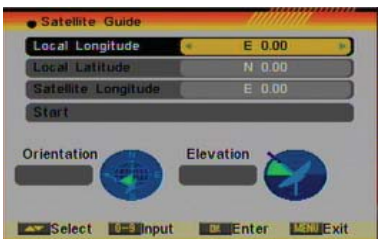
1. Press [Left/Right] to change the marked satellite. Press [Left/Right] to change the marked TP.
2. Press [Red] button to open the “Edit TP” menu (OSD 54). Here you can edit the Transponder’s data like frequency, polarity and Symbol Rate. In this window, the search of the channels of the TP can be done selecting the “Search” option and pressing [OK].
3. Press [Green] button to open the “Add TP” menu (OSD 55). Here you can add a new TP and setup its parameters like frequency, polarity and Symbol Rate. In this window, the search of the channels of the TP can be done selecting the “Search” option and pressing [OK].
4. Press [Yellow] button will open a dialog box asking you to confirm the deletion of the current TP (OSD 56). If you select “Yes” all the related channels will be deleted. If you select “No” the operation will be cancelled.
5. Pressing the [Blue] button will open a dialog box asking you to confirm the deletion of all Transponders. If you select “Yes”, all channels of the current satellite will be deleted. If you select “No” the operation will be cancelled.



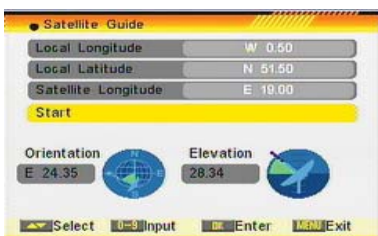
OSD 55



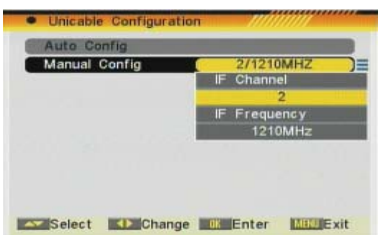
OSD 56



OSD 57



OSD 58



OSD 59

## 4.6. SATELLITE GUIDE

When you enter "Satellite Guide" menu, you will see the screen like beside (OSD 57).

Here you can enter your local longitude and latitude and the satellite's longitude. The receiver calculates the antenna's azimuth and elevation to point your antenna to the selected satellite.

1. Use the [Number] buttons to input the values of "Local Longitude", "Local Latitude" and "Satellite Longitude".
2. Press [ $\leftarrow$   $\rightarrow$ ] buttons to select east or west in "Local Longitude" and "Satellite Longitude" or to select north or south in "Local Latitude".
3. Highlight the "Start" item and press [OK]. In the lower part of the window the corresponding values for the antenna setting are displayed (OSD 58).
4. Orientation means the angle between south and satellite.
5. Press [Exit] to leave this feature

## 4.7 UNICABLE CONFIGURATION

If you have an Unicable installation that allows you to distribute a satellite signal through a unique cable up to 8 receivers as maximum, in this menu option you can configure the receiver (OSD 59). There are two ways of doing it:

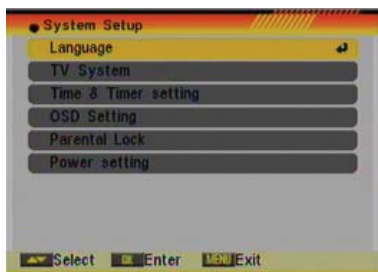
1. Automatic Configuration. Unicable system assigns automatically the frequency that every receiver uses to work.
2. Manual Configuration: Press [OK] to check the options:
  - FI Channel: select with [ $\leftarrow$   $\rightarrow$ ] keys the numbers from 1 to 8.
  - FI Frequency: With [ $\leftarrow$   $\rightarrow$ ] keys choose the frequency.

Each receiver of the Unicable system must have a channel and frequency different from the rest.

## 5. SYSTEM SETUP



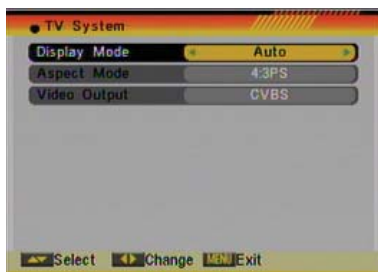
OSD 60



OSD 61



OSD 62



OSD 63

Press [Menu] in the TV mode to enter the main menu (OSD 60).

1. Press [Left] [Right] to select the System Setup item.
2. Press [OK] to enter the selected item.

In the System Setup menu (OSD 61):

3. Press [Left] [Right] to select the wanted menu item.
4. Press [OK] to enter the selected item among.

- Language
- TV System
- Time & Timer Setting
- OSD Setting
- Parental Lock
- Power Settings

### 5.1. LANGUAGE

After selecting the "Language" menu you will see a window like beside (OSD 62):

1. Language: press [Left] [Right] to select languages. The selection of languages include: English, German, French, Spanish, Italian, Portuguese, Turkish, Polish, Russian, Danish, Greek, Hungarian, Arabic, Farsi.

2. First Audio: Some channels offer more than one audio language. This function allows you to set the preferred audio language for those channels using [Left] [Right]. If a channel offers the same audio language as the "First Audio" you set the system will play this audio language as default. If the channel does not offer this audio language then the system will compare the offered languages with the second audio language. The selections of audio languages include: English, German, French, Spanish, Italian, Portuguese, Turkish, Polish, Russian, Danish, Greek, Hungarian, Arabic, Farsi.

3. Second Audio: If the channel has no audio language that corresponds with "First Audio" but with "Second Audio" the system will play the second audio language as default. If no audio language corresponds with the "Second Audio" then the default language of the current channel will be played instead.

The selections of audio languages include: English, German, French, Spanish, Italian, Portuguese, Turkish, Polish, Russian, Danish, Greek, Hungarian, Arabic, Farsi.

4. Press [Exit] to return back from "Language" menu.

### 5.2. TV SYSTEM

When you enter the "TV System" menu you will see the screen like below (OSD 63):

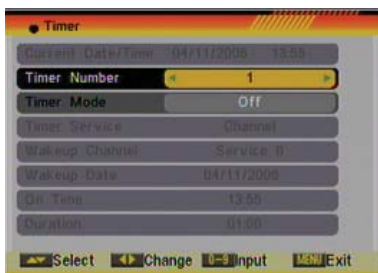


1. Display Mode is used to switch the display mode. You can select from Auto / PAL / PAL-M / NTSC 3.58. Press [◀ ▶] to select the desired mode.
2. Aspect Mode is used to switch the screen aspect ratio mode. You can select from Auto / 4:3 PS / 4:3 LB / 16:9. Press [◀ ▶] to select the needed mode.
3. Video Output is use for switching the screen aspect ratio mode. Now we provide below options: RGB / CVBS. You can press [◀ ▶] key to select each mode circularly.
4. Press [Exit] to close the "TV System" menu.

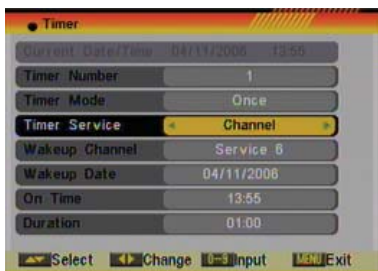
\* With this model, RGB output is not allowed.



OSD 64



OSD 65



OSD 66

## 5.3. TIME & TIMER SETTING

When you enter "Time" "Local Time Setting" or "Sleep Timer" a menu with three items will be opened (OSD 64). Use [◀ ▶] to select between the three options and confirm with [OK].

### 5.3.1. TIMER

Select "Timer" item and press [OK] to enter the "Timer list" menu (OSD 65).

The current time will be displayed in the first column. If the current time is incorrect, please modify it with the [Number] buttons at the "Time" menu.

1. Timer Number: You can press [◀ ▶] to set the Timer number. There are totally 8 timers.
2. Timer Mode: Select how often the timer is running: Once, Daily, Weekly, Monthly and Yearly. Or switch the timer off.
3. Timer Service: Select between Channel (timer setting for channel change and Wakeup/Sleep) and Message (reminding message).
4. When you select "Channel" (timer setting for channel change and Wakeup/Sleep) then you have further options you need to set (OSD 66):

- Wakeup Channel: press [OK] to enter the channel list and select the channel you want to see.
- Wakeup Date: use number buttons to input your wakeup date.
- On Time: use number buttons to input your wakeup time. If date and time are reached then no matter if the system is in standby mode or in playing mode, it will automatically switch to the channel you set and start to play.
- Duration: Here you can set the time you want to see or play this channel. After the time set the system will automatically switch to standby mode. If you don't want the box to be switched to standby mode then set the duration to 00:00.
- 5. When you select "Message" (reminding message) option in "Timer Service" then you can enter additional data (OSD 67):



OSD 67

- Wakeup Message: press [Left/Right] to select the category of the reminding message from Birthday, Anniversary and General.
  - Wakeup Date: Use the [Number] buttons to input your wakeup date.
  - On Time: Use the [Number] buttons to input your wakeup time. If date and time are reached, no matter if the system is in standby mode or in playing mode, it will automatically show a reminding message.
  - The message will be displayed on the screen until you press [Exit] to close it.
6. Press [Exit] to leave the "Timer" menu.



OSD 68

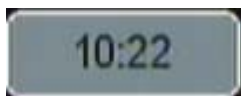
### 5.3.2. LOCAL TIME SETTING

When you select "Local Time Setting" and press [OK] then you will see a window like the one beside (OSD 68):

1. GMT Usage: This item is used to set the time by using the time signal from the satellite. Press [Left/Right] to change the setting.
2. The "GMT Offset" item is only available when "GMT Usage" is set to "On". Press [Left/Right] to set the "GMT Offset" value. With every time you press the button the time offset will be increased / decreased by half an hour.
3. Summer: this option is only available when "USE GMT" is enabled. Use [Left/Right] to switch on/off the summer timetable.
4. "Date" and "Time" items are only available when the "GMT Usage" is set to "Off". Press [Left/Right] to select one item and use number buttons to input time and date directly.

NOTE: If the current channel provides the correct time information, you will see the current time after you entered "Time" menu. If the channel doesn't provide time information, you have to input the date and time information manually. The most channels support the time signal.

5. Show time: Use [Left/Right] to switch on/off this option. When the option is enabled, the time will be displayed at the TV in a frame in the top right margin.(OSD 69)
6. Press [Exit] to exit the menu.



OSD 69



OSD 70

### 5.3.3. SLEEP TIMER

Press [OK] button in this option to set the sleep timer. You will see "SLEEP TIME OFF / SLEEP TIME 10 / SLEEP TIME 30 / SLEEP TIME 60 / SLEEP TIME 90 / SLEEP TIME 120". (OSD 70)

If you set a sleep time, the system will change to Standby mode after the chosen time period.



OSD 71



OSD 72

## 5.4. OSD SETTING

When you select "OSD Setting" you will see a screen like beside (OSD 71):

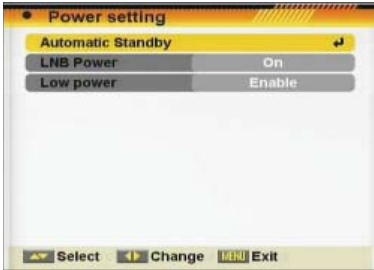
1. Subtitle Display: Press [◀ ▶] to select "On" or "Off". If the current channel has subtitle information, it will be displayed if this function is "On". If this function is "Off" subtitles won't be displayed.
2. OSD Timeout: This setting determines the duration the info window is displayed on the screen when you change channels. Press [◀ ▶] to set the time between 1 to 10 seconds.
3. Position: To define the position of the information's bar (top/bottom).
4. OSD Transparency: With this parameter you can set the transparency of the menus. Press [◀ ▶] select the value between 10%, 20%, 30%, and 40% and "NO" (means no transparency function).
5. Load OSD Setting Default: If you want to reset your OSD settings to the default settings then select this item and press [OK].
6. Press [Exit] button to leave the "OSD Setting" menu.

## 5.5. PARENTAL LOCK

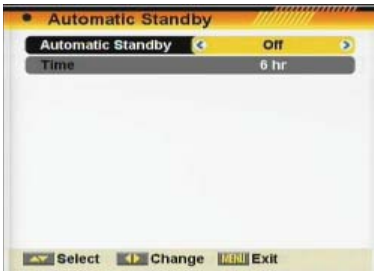
You can set a password for anyone who wishes to operate the "Installation" menu. You can also set the password to lock channels. Below you find how to set and change the password.

1. On "Parental Lock", press [OK] to open a dialogue box and input the password. After you entered the correct password, you will see a screen like beside (OSD 72):
2. Menu Lock: If Menu Lock is set to "Yes" then you need to enter the password every time you want to open then menu. If it is set to "No" then you can open the menu without entering the password first.
3. Channel Lock: If set to "Yes" then you need to enter the password before you can see those channels which have been marked as locked channels in the Channel menu. If it is set to "No" then even those channels can be selected without entering the password first.
4. New Password: Here you can change the existing password. You should do this after you set up the receiver the first time and every time when you think that your password is known by unauthorized persons. To change the password, enter the new password in the "New Password" item and repeat the same one in the "Confirm Password" item. If the passwords are not identically then you will see a warning message. If you entered the same new password in both fields then you will see the message "Saving Data, Please Wait...". From now on you need to use the new password to open locked menus or locked channels.





OSD 73



OSD 74

NOTE: The default password is 0000

5. Press [Exit] to leave the "Parental Lock" menu.

## 5.6. POWER SETTING

When you select this option, you will see a screen like beside (OSD 73):

1. Automatic standby: In this option you can program the automatic turning off of the receiver (OSD 74).

The programming can be made after a period of time between 1 and 8 hours, with 1 h. intervals. The default time is 3 hours.

-On: The receiver will be in standby mode automatically after this time, as long as during this time no commands have been sent to the receiver through the remote control or buttons of the front panel, and no programmed timers are run.

-Off: Auto standby function gets deactivated.

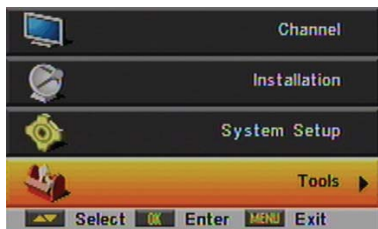
2. LNB Power: If your receiver is connected to the LNB directly then you need to set the LNB Power to "On". If your receiver is connected to a multi switch (SMATV signal distribution system) then it may be that you don't need to provide the power to the LNB. But since this is depending on the kind of installed distribution system we recommend you to contact your installer or to refer to the user manual of this system to get the correct information.

You also just can change this setting and check if you still can receive the channels. If the LNB Power is off and you still can see all channels then we recommend this setting.

3. Low Power Consumption: At this option, you could enable / disable the low power consumption mode. This mode allows saving current consumption when the receiver is stand-by (<1W in standby. By default this option is enabled).

4. Press [Exit] button to leave this menu.

**6. TOOLS**



OSD 75

Press [Menu] in the TV mode to enter the main menu (OSD 75).

1. Press [Left] [Right] to select the Tools item.
2. Press [OK] to enter the selected item.

In the Tools menu (OSD 76):

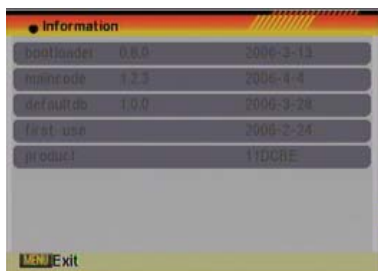
3. Press [Left] [Right] to select the wanted menu item.
4. Press [OK] to enter the selected item among.
  - Information
  - Quick Setup
  - Factory Default
  - Software Upgrade



OSD 76

**6.1. INFORMATION**

1. When you select the “Information” menu you will see a screen like beside (OSD 77). The screen displays data about the current channel. This function is the same as the function [Info] in the full screen TV mode.
2. Press [Exit] button to leave the information display.



OSD 77

**6.2. QUICK SETUP**

The receiver includes an installation assistant that will help you to setup the different parameters as you can see at OSD 78.

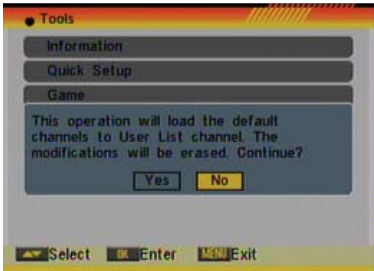
1. Language: press [Left] [Right] to select the language that will appear on the menus (see point 5.1.)
2. First Audio: Some channels offer more than one audio language. This function allows you to set the preferred audio language for those channels using [Left] [Right]. (See point 5.1.)
3. Second Audio: Some channels offer more than one audio language. This function allows you to set the second audio language for those channels using [Left] [Right]. (See point 5.1.)
4. LNB Power: If your receiver is connected to the LNB directly then you need to set the LNB Power to “On”. If your receiver is connected to a multi switch (SMATV signal distribution system) then it may be that you don’t need to provide the power to the LNB. (See point 5.6.)
5. Single Search: Selecting this option and pressing [OK], you will access to the Antenna Setup menu (see point 4.1.).
6. Multi search: Selecting this option and pressing [OK], you will access to “Multi search” menu (see point 4.3.).



OSD 78

ENGLISH

rev 1.2



OSD 79

### 6.3. FACTORY DEFAULT

When you press [OK] on the "Default Value" item:

1. A dialogue box will occur where you need to enter the password.
2. After you input the correct password a warning message will be displayed like the one beside (OSD 79).
3. If you select "Yes" then all changes you made will be reset to default values. Make sure you really want to do this!
4. Press [Exit] in both steps will close the window without resetting the receiver.



OSD 80

### 6.4. SOFTWARE UPGRADE

There are two ways of upgrading the software of the receiver as you can see at OSD 80.

#### 6.4.1. UPGRADE BY SATELLITE

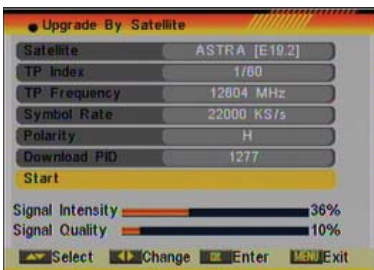
This function can upgrade the software of your receiver through data sent by a satellite. At the moment we offer satellite updates only through ASTRA1 satellite.

1. Select the satellite and TP or input the TP value and download PID.
2. Then mark "Start" and press [Enter] to begin the download of the upgrade (OSD 81). This may need up to 60 Minutes. Therefore we suggest using of this function only if you don't intent to watch TV during this time.

At the moment of writing this manual, the data for the software upgrade by Satellite is:

- Satellite: Astra
- TP Frequency: 12604 MHz.
- Symbol Rate: 22000
- Polarity: Horizontal
- Download PID: 1277

For changes in the data of the satellite please visit <http://www.ftemaximal.com> .



OSD 81

**7. TECHNICAL SPECIFICATION**

<b>VIDEO</b>	
Decoding	MPEG-2 & MPEG-1 compatible
Bit rate	Max 15Mbps
Output	PAL/NTSC
Active pixel	720x480 @ 30fps; 720x576 @25fps
Output connector	Scart, RCA
<b>AUDIO</b>	
Decoding	MPEG-2/MPEG-1 layer I & II
Mode	Mono, Dual, Stereo, Joint stereo
Bit rate	Max 384Kbps
Output connector	Scart, RCA
<b>DEMODULATOR</b>	
Demodulation	QPSK
Symbol rate	SCPC/MCPC
Outer code	RS (204, 188, 8)
Inner code	ALL DVB rates
Energy dispersion	DVB-S recommendation
<b>INPUT SIGNAL</b>	
Frequency	950MHz ~ 2150MHz
Input level	-65dBm ~ -25dBm
Channel bandwidth	36MHz
Input socked	F-type connector
<b>LNB CONTROL</b>	
Power supply	13/18V (300mA max*) with short circuit protection
Polarized control	13/18V polarization (vertical/horizontal)
DiSEqC control	DiSEqC1.0 and DiSEqC1.1 * This receiver does not allow moving Diseq motors
<b>MISCELLANEOUS</b>	
Supply voltage	230VAC 50 Hz
Power consumption	Typ. <5 watts / Max. 15 watts
Stand-by power consumption	< 1 watts
Operation temperature	+5° a +40°
Storage temperature	-20° a +70°
Dimension (W x D x H)	210x133x44 mm
Weight	0.7Kg

ENGLISH



**“WE , FTE MAXIMAL, DECLARE THAT THE PRODUCT  
MAX S93+  
IS IN CONFORMITY WITH FOLLOWING DIRECTIVES  
LVD 73/23/EEC  
EMC 89/336/EEC  
AS LAST AMENDED BY 93/68/EEC”**



#### ESPAÑA

Mogoda, 110  
Pol. Industrial Can Salvatella  
08210 Barberà del Vallès  
(Barcelona) España  
Tel. 00 34 93 729 27 00  
Fax. 00 34 93 729 30 73  
ftemaximal@ftemaximal.com  
www.ftemaximal.com

#### FRANCE

16 ZAE Les Mouilles  
74570 Groisy  
Tel. 00 33 450 68 80 17  
Fax. 00 33 450 68 84 68  
sav@ftemaximal.fr  
www.ftemaximal.com

#### ITALIA

Via Edison, 29  
42040 Calerño di  
Sant'Ilario d'Enza (RE)  
Tel. 00 39 05 22 90 97 01  
Fax. 00 39 05 22 90 97 48  
fte@fte.it  
www.ftemaximal.com

#### DEUTSCHLAND

BCN Distribuciones S.A. Unipersonal  
Zweigniederlassung Deutschland  
Auf der Höhe, 8  
44536 Lünen  
Deutschland  
Tel. 00 49 (0) 23 18 78 5 - 01  
Fax. 00 49 (0) 23 18 78 5 - 200  
info@ftemaximal.de  
www.ftemaximal.de

#### PORTUGAL

Rua José Carlos Ary dos Santos  
A-das-Lebres (Loures)  
2670-791 Santo Antão do Tojal  
Tel. 00 351 219 83 87 00  
Fax. 00 351 219 83 87 09  
ftemaximal@ftemaximal.pt  
www.ftemaximal.com

#### UNITED ARAB EMIRATES

P.O.Box 262442  
Jebel Ali Free Zone  
Warehouse FZS5AB03  
Dubai  
Tel. 00 971 4 886 5700  
Fax. 00 971 4 886 5701  
www.ftemaximal.ae